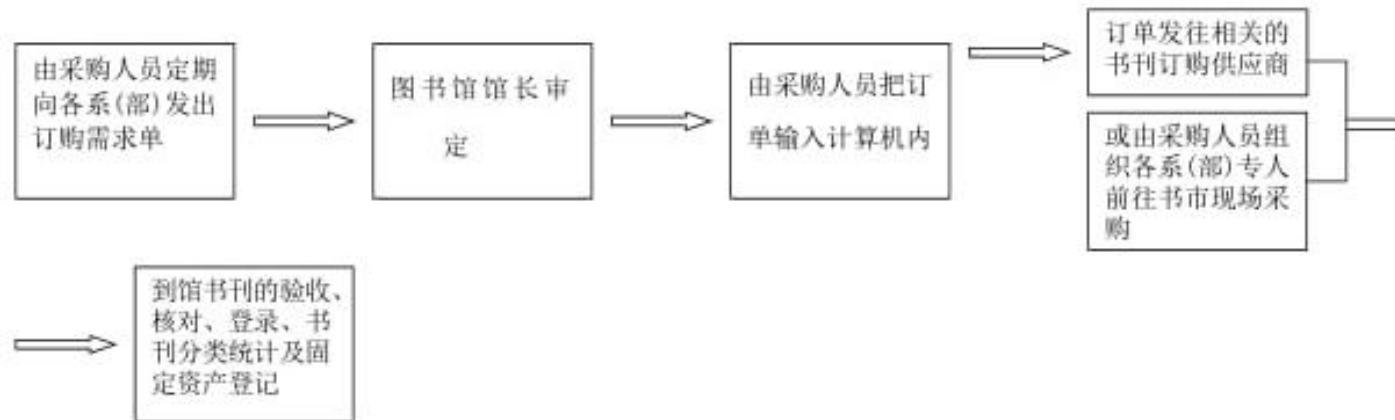


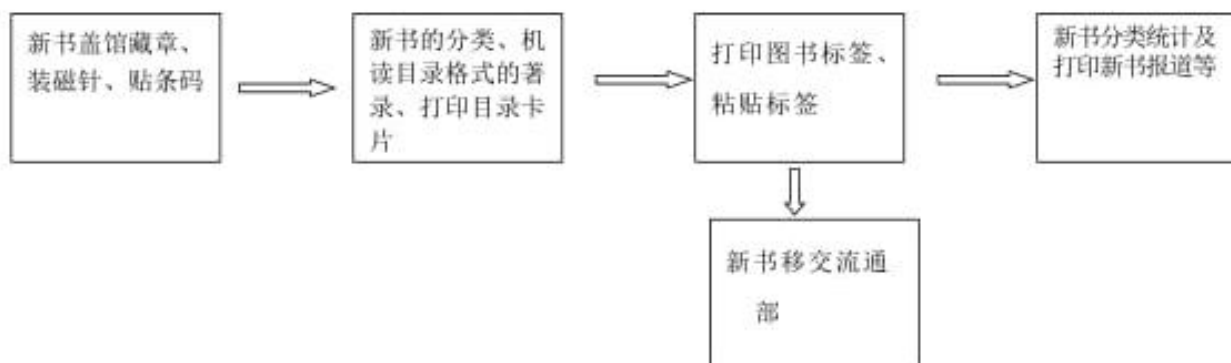
## 福建生物工程职业技术学院图书馆工作流程图

### 1. 采编部

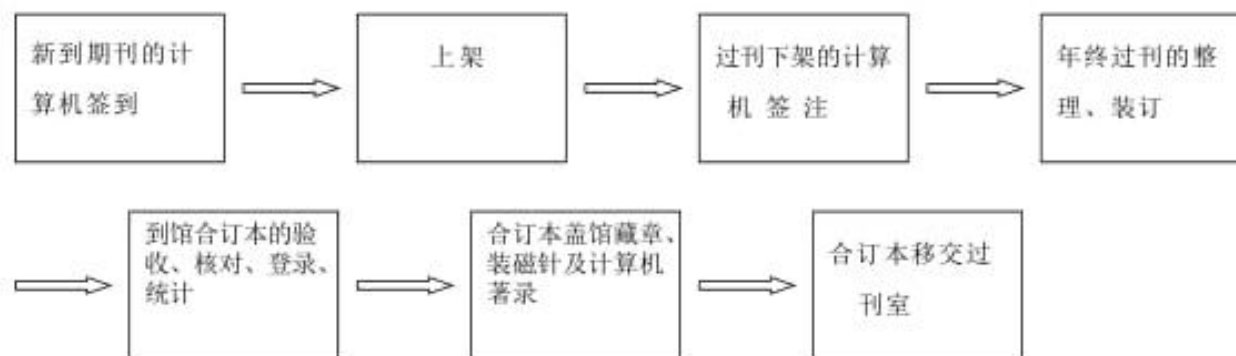
#### 1.1 中外文书刊采购



### 1.2 中外文图书加工



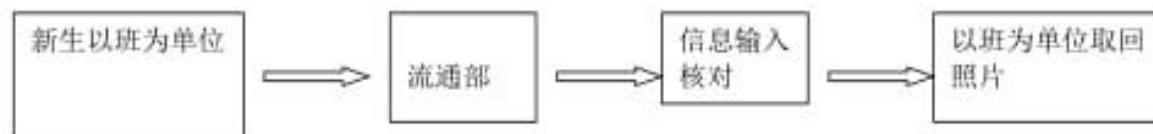
### 1.3 中外文期刊加工



## 2. 流通部

### 2.1 读者资格认定

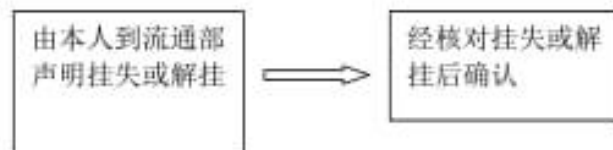
#### 2.1.1 学生



#### 2.1.2 教师

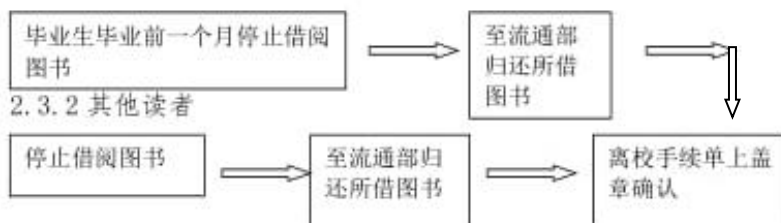


### 2.2 挂失或解挂

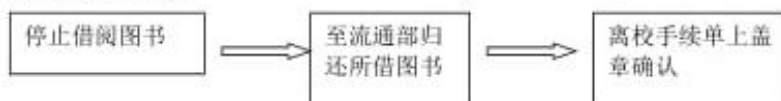


## 2.3 办理离校手续

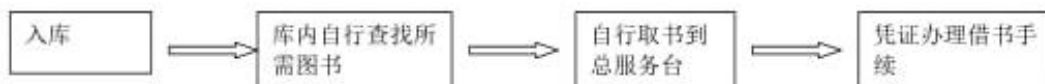
### 2.3.1 毕业生



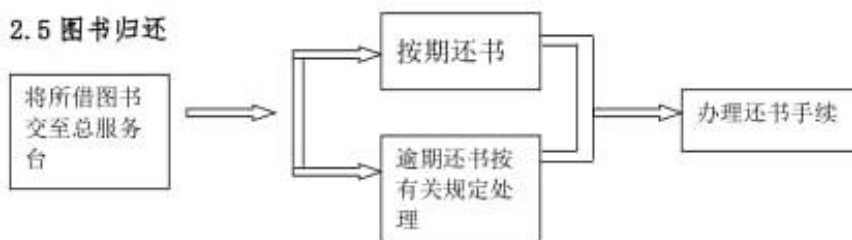
### 2.3.2 其他读者



## 2.4 图书借阅



## 2.5 图书归还



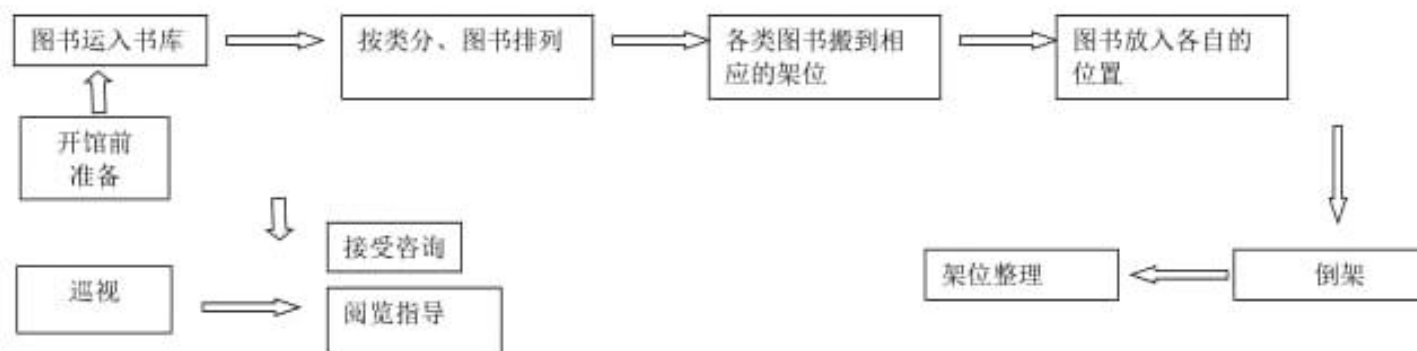
## 2.6 借书工作流程



## 2.7 还书工作流程



## 2.8 书库管理工作流程



### 3.1 系统维护

#### 3.1.1 硬件问题



#### 3.1.2 数据库备份



### 3.2 网页维护

